

State of Wyoming Corner Record

(In compliance with the *CORNER PERPETUATION AND FILING ACT*, Wyoming Statutes, 1997 Section 33-29-140 et. seq., and the Rules and Regulations of the Board of Professional Engineers and Professional Land Surveyors)

Reverse side of this form may be used if more space is needed.

Record of original survey and citation of source of historical information (if corner is lost or obliterated). Description of corner monumentation evidence found and/or monument and accessories established to perpetuate the location of this corner. Sketch of relative location of monument, accessories, and reference points with course and distance to adjacent corner(s) (if determined in this survey). Method and rationale for reestablishment of lost or obliterated corner.

LOCATION: Northeast Corner of Section 14, T13N, R68W, 6th Principal Meridian, Laramie County.

RECORD: 1871 - Set granite boulder 18x10x9.

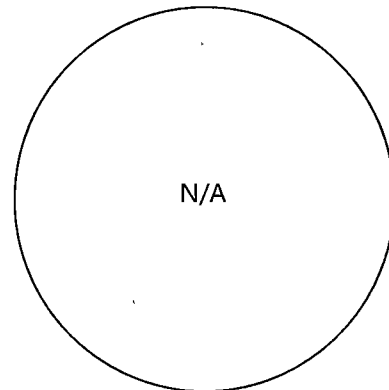
1998 - Chris Hamilton, LS 5297, files corner record on 1" galvanized pipe without cap. A 15x9x8 white granite stone lying next to pipe. Stone is well marked and a t-post is set alongside.

1999 - Larry Penney (?), files corner record noting found appropriately marked original stone with iron pipe north and T-post.

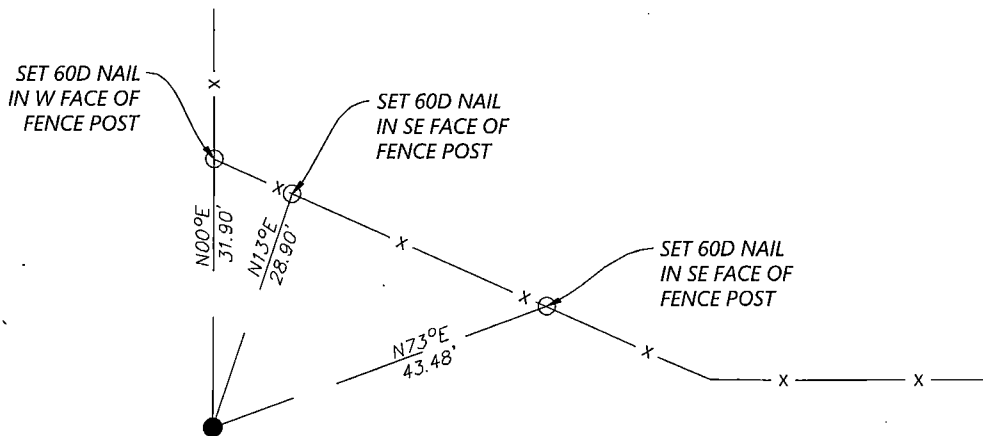
2002 - Daniel Siek, LS 2097, files corner record on found granite stone lying over. Shot iron pipe set alongside.

RECOVERED: 2019 - Westwood field crews recover the stone and pipe referenced in previous corner records filed in 1998, 1999, and 2002.

RESET: Appears stone and pipe have been used for the corner location. Accepting location of the stone as the location of the corner because it appears 1998 and 1999 records held the stone. Set ties as shown below.



Monument Inscription



Date of Field Work: 9/12/2019

Office Reference: 22237.01

Cross Index Plat

1	2	3	4	5	6	7	8	9	10	11	12	13	14	15	16	17	18	19	20	21	22	23	24	25	
A																									A
B	+	+	+	+	+	+	+	+	+	+	+	+	+	+	+	+	+	+	+	+	+	+	+	+	B
C		6																							C
D	+	+	+	+	+	+	+	+	+	+	+	+	+	+	+	+	+	+	+	+	+	+	+	+	D
E																									E
F	+	+	+	+	+	+	+	+	+	+	+	+	+	+	+	+	+	+	+	+	+	+	+	+	F
G																									G
H	+	7																							H
J																									J
K																									K
L																									L
M	+	18																							M
N																									N
O	+	+	+	+	+	+	+	+	+	+	+	+	+	+	+	+	+	+	+	+	+	+	+	+	O
P																									P
Q	+	+	+	+	+	+	+	+	+	+	+	+	+	+	+	+	+	+	+	+	+	+	+	+	Q
R																									R
S	+	+	+	+	+	+	+	+	+	+	+	+	+	+	+	+	+	+	+	+	+	+	+	+	S
T																									T
U	+	30																							U
V																									V
W	+	+	+	+	+	+	+	+	+	+	+	+	+	+	+	+	+	+	+	+	+	+	+	+	W
X																									X
Y	+	31																							Y
Z																									Z
1	2	3	4	5	6	7	8	9	10	11	12	13	14	15	16	17	18	19	20	21	22	23	24	25	

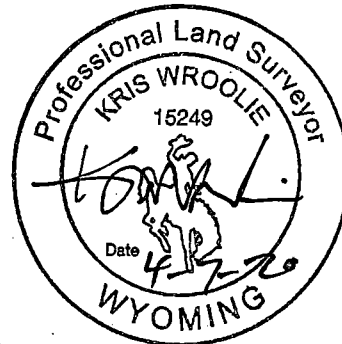
Firm/Agency, Address

Westwood Professional Services
 3701 12th St. N. Ste. 206
 St. Cloud, MN 56303

This corner record was prepared by me or under my direction and supervision.

SEAL & SIGNATURE

Telephone Number: (320)-253-9495



RECP #: 775837
 RECORDED 4/15/2020 AT 10:16 AM BK# 2668 PG# 269
 Debra K. Lee, CLERK OF LARAMIE COUNTY, WY PAGE 1 OF 1

Corner Name Northeast Corner Section 14, T 13 N, R 68 W, 6th P.M.

Cross-Index No.: J-21

County: Laramie Wyoming

SBRPEPLS/PLSW: March 1994; PLSW January 1998